

Meadows West Code of Conduct



Meadows West School Mission Statement

At Meadows West School:

We provide an academic
climate in which all are
encouraged to work to their
potential

We exemplify and encourage
respect within the school
community.

WE Learn

We Do Our Best

We Treat Each Other With
Respect

We Are Meadows West





Appropriate Behaviours

- ★ Greeting others
- ★ Helping others
- ★ Respecting others
- ★ Working to the best of your ability
- ★ Taking care of school property



Examples of Unacceptable Behaviours



- ★ All forms of Bullying (physical, verbal, emotional, social or cyber bullying)
- ★ Vandalism
- ★ Possession of cigarettes, vapes, lighters , drugs, alcohol or weapons
- ★ Stealing
- ★ Discrimination of race, colour, religion , disability or sexual orientation



Proactive Strategies



- ★ Planning based on children's interests and developmental needs
- ★ Establish adaptable routines that help children gain trust, security and self control
- ★ Establish clear consistent limits
- ★ Working together to solve problems
- ★ Recognize appropriate behaviour through certificates, tickets, special mention, etc.



Depending on the severity and frequency of behaviours
the following steps may be taken:

- ★ Determine what may be contributing factors that are always causing the behaviour
- ★ Determine a temporary alternative setting within the school
- ★ Plan steps to reduce or eliminate the behaviour
- ★ Schedule a meeting with support team to discuss concerns, develop a plan of action
- ★ Create a formal contract/success plan that outlines expectations and consequences.



Next Steps...

- ★ Phone call home, visit or formal conference at the school to determine next steps
- ★ Access and partner with other agencies to support families
- ★ Continue to be solution focussed without placing blame
- ★ Work toward restitution and reconciliation
- ★ Provide a letter that outlines steps discussed



Extreme Behaviours such as:

The Possession of Guns

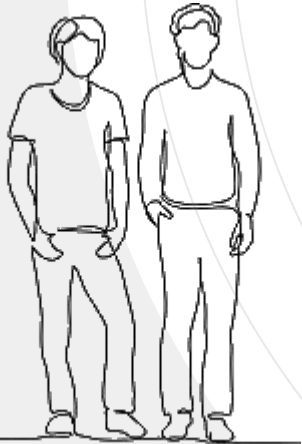
A student who brings a gun to school shall automatically lose the right to attend that school. The principal shall notify the police and consult with the superintendent to request a six week suspension. The superintendent may recommend expulsion.

The Possession of Knives

When a student is found to be carrying a knife that could be regarded as a weapon; the principal shall confiscate the knife and notify the parent/guardian that it is being held at the school to be retrieved by the parent/guardian. Suspension for the balance of the day and possibly an additional 3 days would be appropriate dependent upon the age of the student and the type and size of the knife.

The Possession of Other Weapons

When a student is found to be carrying other weapons, the principal shall confiscate the weapon and notify the parents/guardians. Suspension for the balance of the day and possibly an additional 3 days would be appropriate dependent upon the age of the student and the nature of the weapon.



Extreme Behaviours such as:

Threats

If a student uses a gun, knife or other weapon in a threatening way toward another student or adult, the offending student shall be suspended immediately for a minimum of five days. The principal will consult with the superintendent as to the possibility of an extension up to six weeks and expulsion. The police will be notified.

Attacks

If a student in an attack on another student or adult uses a gun, knife or other weapon, the offending student shall be suspended immediately for a minimum of five days. The principal will consult with the superintendent as to the possibility of an extension up to six weeks and expulsion. The police will be notified.

May result in:

- Suspension (5 days with approval from Superintendent)
- Expulsion from school
- Non-trespassing order (as outlined in the Winnipeg School Division's policy JGD Suspension of Students)



Bully Prevention

School-wide Prevention

- ★ Provide a common definition of bullying
- ★ Survey the presence of bullying behaviour in the school
- ★ Involve parents
- ★ Implement school-wide preventative measures
- ★ Use positive behaviour strategies for expected behaviour
- ★ Develop common language for school-wide behaviour expectations

Classroom Prevention

- ★ Confront bullying behaviour
- ★ Teach pro-social skills
- ★ Involve parents
- ★ Support the victim(s)
- ★ Develop and discuss rules and expectations related to bullying behaviours
- ★ Quickly and effectively resolve the issue
- ★ Provide help and support for the bully (counseling, outside agencies, in-house mentorship, restitution, etc.



What is a Bully

An individual who repeatedly hurts, embarrasses, and frightens another person on purpose.

An individual who willfully uses their power or size to repeatedly hurt another person.

Physical bullying can involve but not limited to:

Repeatedly hitting, kicking, shoving, spitting, damaging property.

Verbal bullying can involve but not limited to:

Name calling, hurtful teasing, humiliating or threatening, someone, making racist, homophobic or sexist comments repeatedly.

Social bullying involves: Exclusion, gossiping, making others look foolish and damaging friendships repeatedly

Cyber bullying involves: Repeatedly using email, text messaging, social media and Internet sites to threaten, harass, embarrass, exclude or damage reputations and friendships



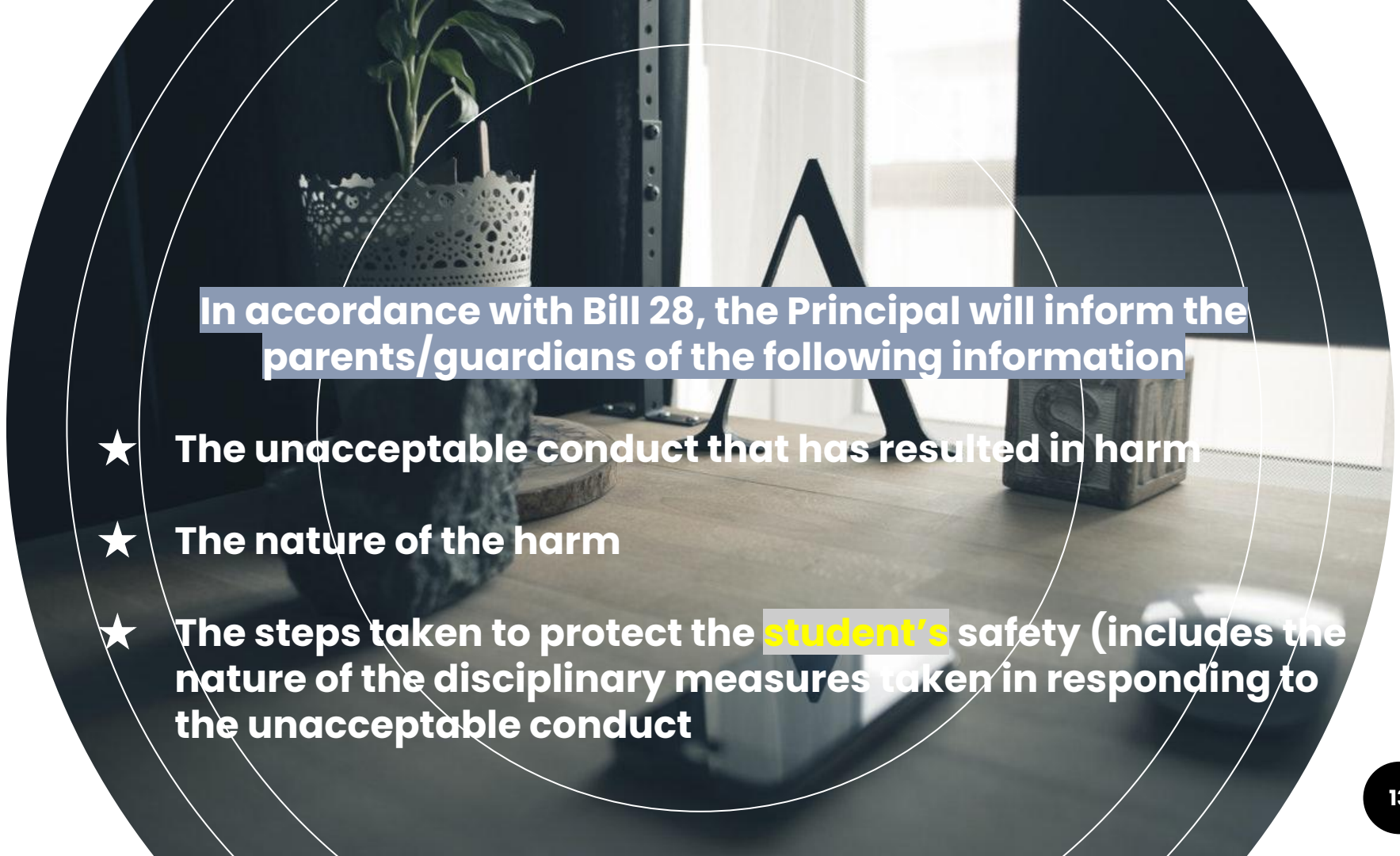
What do you do if you are bullied?

- ★ Stay calm
- ★ Walk away
- ★ Tell an adult
- ★ Stand up to the bully
- ★ Stay in a group
- ★ Stay in areas you feel safe .

What to do if you see others bullied

- ★ Be a friend to the students
- ★ Support the student who is being bullied
- ★ Stand up to the bully
- ★ Walk away and talk an adult immediately
- ★ Include the student who is being bullied
- ★ Invite the student to play with you in another location





In accordance with Bill 28, the Principal will inform the parents/guardians of the following information

- ★ **The unacceptable conduct that has resulted in harm**
- ★ **The nature of the harm**
- ★ **The steps taken to protect the **student's** safety (includes the nature of the disciplinary measures taken in responding to the unacceptable conduct**

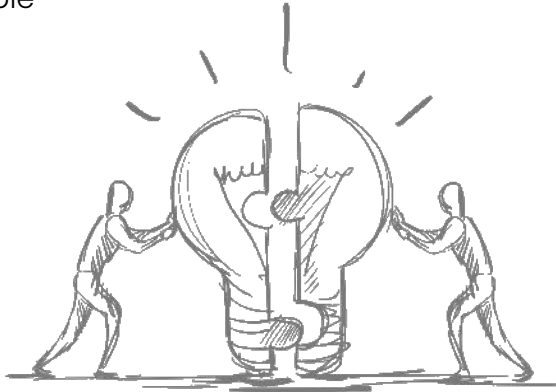
Bill 28

Limitations

The Principal must not disclose the name or personal information about the student who was involved in unacceptable behaviour

Additional Obligation

The Principal will make a report on the bullying behaviour in addition to the report on unacceptable behaviour



Response to Bullying Incident

- ★ The child who was victimized will receive immediate support from staff
- ★ The incidents will be recorded. Parents/guardians of the victim and bully will be informed and asked to meet regarding the problem
- ★ The bullying behaviour will be thoroughly investigated and the bullying behaviour will be stopped immediately
- ★ Police will be consulted
- ★ Parent/guardians will be involved in the process
- ★ Parents/guardians will be informed regarding each step in response to the bullying incident
- ★ A course of action and support for the victim will be determined
- ★ Develop strategies/tips for students to deal with bullies
- ★ Attempts will be made to provide support for the bully/bullies to change their behaviour
- ★ Intervention strategies for the bully/bullies (bi-weekly check-ins, discussion groups, learning about each other, repairing harm done, etc.)
- ★ Daily-weekly “check-ins” will occur with the victim, administration and staff
- ★ A review date of the plan will be determined once the action plan is created and agreed upon by all parties
- ★ After a two week monitoring period the action plan will be reviewed and next steps will be determined with parents/guardians, student, administration and staff



“

Courage is what it takes to stand up and speak; courage is also what it takes to sit down and listen.

Winston Churchill



Meadows West School
150 Inkster Garden Dr.
Winnipeg, MB
R2R 2R8

204-694-6755
meadowswest@wsd1.org