

Our Year at a Glance

English Language Arts

This year in ELA, we will be focusing heavily on guided reading, with a heavy emphasis on reading comprehension strategies to help our students continue to build their wide array of readers' tools. In writing, students will work towards continuing to develop our students' ability to plan for and organize clear and cohesive writing pieces.

Math

In math, students will be working towards developing and solidifying their understanding of various mathematical processes including addition, subtraction, multiplication, division and fractional awareness. We will be focusing on communicating our thought processes, developing mental math and problem solving strategies, thinking flexibly, as well as exploring patterns, space and relationships.

Social Studies

In social studies, we will be exploring national and provincial citizenship. We will also focus on the history of Manitoba, as well as learn about life in and the history of Canada's north. Students will be building skills in the areas of managing information and ideas; thinking critically and creatively; as well as communication and active citizenship. Emphasis will be placed on Indigenous culture and contributions, Residential Schools, Truth and Reconciliation, as well as Human Rights and Responsibilities.

Science

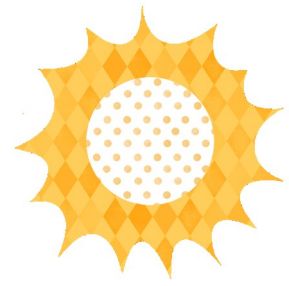
In science, students will be learning about habitats and communities; light; sound; as well as rocks, minerals and erosion. Students will be building skills related to scientific inquiry and the design process.

Health

In health, students will be learning about personal safety; personal and social management; healthy lifestyle practices and family life.

Art

In art, students will focus on visual arts, dance and drama. Students will work towards using artistic language and tools; creative expression; understanding art in context; as well as finding personal value in art.



Welcome to Grade 4!

My name is Leah Page and this is my second year at Sister MacNamara School. I am very much looking forward to an exciting year full of growth and development!

I am available any time and am happy to listen to your concerns and answer any questions that you may have. My email address is lpag@wsd1.org. You can also reach me at (204) 942-6965. I look forward to hearing from you.

