

École Lansdowne

NOVEMBER 2022

MESSAGE FROM ADMINISTRATION:

November is a month for reflection. As Remembrance Day approaches, it's important that we take the time to think about the rights, freedoms, and privileges we enjoy as Canadians. We will be having a Remembrance Day service on Thursday, November 10th at 10:15 am in our gymnasium. Poppies will be distributed to students and donations will be accepted in the office the week prior to Remembrance Day. We encourage those in attendance to wear red or black. Brownies, Girl Guides, Cubs, Beavers, Scouts, and Cadets are invited to wear their uniforms that day.

École Lansdowne teachers have been busy assessing and evaluating students over the past two months and are now ready to share information with you about your child's progress so far this school year. Provincial report cards for Nursery to grade 8 will be sent home on Tuesday, November 15th. For more information regarding the provincial report card and the role of assessment in learning, please visit the Manitoba Education website at www.edu.gov.mb.ca/k12/assess.

In-person tri-conferences are coming up on November 17th and 18th! We ask that you read over your child's report card before your meeting in order to benefit the most from your appointment. The report card describes each student's strengths and needs based on their teacher's assessments and classroom observations. Once again, we are using an online scheduling tool to set up tri-conference meetings for our N to Grade 8 students. A letter with more information regarding tri-conferences and instructions for online registration will be sent home closer to the date. We ask that you make every effort to attend the conferences with your child so that we may have the opportunity to all work together to build a successful partnership in your child's learning.

We want to once again thank all of our families who participated in this year's chocolate fundraiser - your efforts and support are greatly appreciated! We cannot thank you enough for your generosity!

Our Leadership students will be running a Koats 4 Kids drive until November 30th. Should you have any gently used or new **winter clothing** that you are willing to donate, please drop it off at the office.

Should you wish to purchase Lansdowne clothing please visit the link: <https://lansdownefall2022.itemorder.com/> . Please note that all purchases must be made **prior to midnight on Thursday, November 10th**.

We invite all families to attend our *Holiday Craft Sale* on **Saturday November 5th from 10 a.m. -3 p.m.** We still have space for vendors/crafters who wish to rent a table for \$40 for this event. If you or someone you know is interested, please contact the office at 204-338-7039.

Now that winter is upon us, we want to remind parents to always send your child(ren) to school dressed appropriately for the colder weather. Students will be sent outside three times a day for recess unless weather conditions are extreme. All students need to have a warm jacket, hat, mitts, and boots in the fall, and once we start getting a lot of snow we recommend a scarf and ski pants to stay warm while outdoors.

We hope you are all staying healthy and happy, we are looking forward to seeing you at your child(ren)'s tri-conferences this month!

-M. Vince Audino, Principal

- Mme Ashley Morrison, Vice Principal



LANSDOWNE DAILY SCHEDULE

8:20 am: First Bell Rings

- Students line up outside, teachers greet students and walk them to their classrooms

8:25 am: O Canada and Announcements

11:15 am: LUNCH

- Students eat in their classrooms

2:55 pm: Final Bell Rings

- Students line up and are walked to the bus or picked up at their assigned doors



Reminders

NO STOPPING
in front of
École Lansdowne!



YOU MAY BE FINED!

If you will be picking up
your child who usually takes
the school bus, please notify
the office **before 2:00 pm.**



November

The full version of our newsletter is
sent to all families electronically.
Please make sure the school has
your current email address on file so
that you don't miss out on important
information!



ASSIGNED DOORS

Students will enter and exit from only one set
of doors to ensure they remain in small groups
with their cohorts, as follows:

Nursery / Kindergarten • portable doors
closest to grade 4 hallway

Grade 1 • back doors closest to grade 1 hallway

Grade 2 • bus loop doors

Grade 3 • bus loop doors

Grade 4 • portable doors closest to grade 4
hallway

Grade 5 • back doors beside gym

Grade 6 • back doors beside gym

Grades 7 & 8 • front doors on Wiginton (main
entrance)



Absences

If your child(ren) will be away from school for any
reason, please call **SAFE ARRIVAL** at **1-855-278-
4513** to report the absence.

You may also visit <https://go.schoolmessenger.ca>
or download the app to report absences.

Absences must be recorded before 8:30am, and
planned absences may be reported in advance.



L.P.C. Executive 2022-2023

PRESIDENT: Andrea Harrison

EMAIL: winnipeg.lpc@gmail.com

VICE PRESIDENT: Rick de Guzman

Positions available for Secretary and Treasurer*

WHAT IS LUNCH PROGRAM?

The Lunch Program is a **non-profit small business** that is administered by the Lansdowne Parent Council. The L.P.C. is a **volunteer group of parents** who have been given the mandate by the Winnipeg School Division to oversee the Lunch Program. As such, L.P.C. employs a Lunch Program Coordinator and Supervisors. L.P.C. pays E.I., W.C.B., C.R.A. taxes, pension, and vacation pay. Some parent councils within the school division have their lunch programs administered by outside agencies. This allows those parent councils to focus on council work vs. running a business with all the associated responsibilities.

All students staying at school at lunch must be registered.

WHAT MAKES ÉCOLE LANSDOWNE'S LUNCH PROGRAM DIFFERENT?

Many lunch programs cap registration to a specific number of children - some on a first-come, first-served basis and some strictly on need (only those who can prove this need are permitted to enroll, for example both parents work and no one is able to pick up their child). **No other school in the W.S.D. has a Lunch Program with no registration cap and a coordinator onsite 6 hours per day, 5 days per week.**

The École Lansdowne Lunch Program is the **cheapest within the W.S.D.** with no rate increase in over 4 years. The monthly cost is \$22 per student (just \$1.10 per day!), and less if there are more than 2 students per family. The **cost per day is \$1.10 per student**, less if there are more than 2 students per family. Daily fresh milk can also be added at a monthly cost of just \$6.

LUNCH PROGRAM ADJUSTMENTS:

Please be advised that microwaves will not be available. Milk is to be consumed within the lunch hour. Please do not bring milk home that has been sitting in lunch kits. As well, milk is not to be shared by students.

PAYMENT INFORMATION

All payments are due on the 20th of the preceding month (this aligns with the Child Tax Benefit payment).

Lunch Program fees cover program costs only. They do not cover food, snacks, or drinks from the canteen. These must be purchased separately.

A \$5.00 late fee will be applied at the end of the first week of non-payment and a flat \$10.00 fee will be applied after that. Late fees must be paid with the monthly fees.

CONTACT INFO

Lunch Program Coordinator: Mary Sutton
204-338-7039
lunchprogramsuttonm1@gmail.com

L.P.C. MEETING DATES

Monday, December 5, 2022
Monday, January 23, 2023
Monday, March 6, 2023
Monday, April 10, 2023
Monday, May 29, 2023 (A.G.M.)

YOUR PARTICIPATION AND FEEDBACK MAKE A DIFFERENCE!

In its mission to enhance the student experience at École Lansdowne, the LPC is a volunteer organization that runs the lunch program, conducts fundraising activities which support school programming, and works with school administration on common needs and interests of families. Input in the form of feedback, suggestions, and volunteering are always appreciated, especially in these new times - you don't have to be a member of the executive either. Feel free to engage the LPC at winnipeg.lpc@gmail.com - we would love to hear from you!

IMPORTANT INFORMATION

The Lunch Program Coordinator makes every effort to contact parents regarding payment and late payments. The L.P.C. understands that unexpected things happen which could cause short-term financial difficulties. Please contact the Coordinator to discuss options, as arrangements can be made. Refusal to acknowledge letters or phone calls will result in removal of the child(ren) from the Lunch Program.

All concerns related to the program must first be discussed with the Coordinator before involving the L.P.C.



L.P.C. Executive 2022-2023

PRESIDENT: Andrea Harrison

EMAIL: winnipeg.lpc@gmail.com

VICE PRESIDENT: Rick de Guzman

Positions available for Secretary and Treasurer*

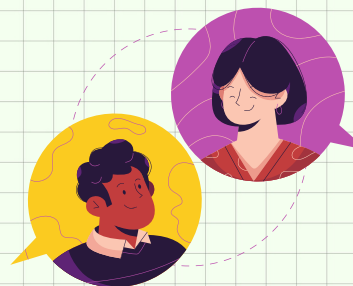
The next LPC meeting is on **Monday,** **December 5th**

The next LPC meeting will be held virtually
using Google Meet at

meet.google.com/oac-xmtv-fmj

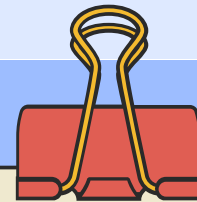
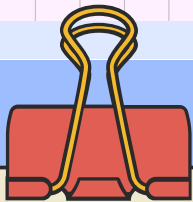


There is no pressure to have your camera on,
or to participate in the discussion--feel free to
just listen in if you'd like. We're glad to have
you join us!



Interested in joining the Executive Committee?

Our Treasurer and Secretary positions remain
open. These positions are a great way to build
skills and gain experience. Contact
Winnipeg.LPC@gmail.com if you're interested or
would like more information--we'll be happy to
have you on board!



Winter gear needed here!

You can help!

November is Koats for Kids Month

Donate new or gently used coats, ski pants,
boots, mitts, scarves and toques only.

All kids sizes needed.

****NO OTHER CLOTHING PLEASE****





Holiday Craft Sale

in support of École Lansdowne's
grade 7/8 trip to Québec

Crafters & Vendors Welcome!

Bake Sale, Door Prizes & Raffle Table

Saturday,
November 5th
(10 am- 3 pm)

École Lansdowne Gym
715 Wiginton Street



FREE ADMISSION!

for rental or general info, please contact: Ailla Celestino @ 204-338-7039 or acelestino@wsd1.org

École Lansdowne School Apparel



BACK BY POPULAR DEMAND!

We will be doing another school clothing order. Please note that all orders must be placed online by
Thursday, November 10th at midnight.

Please be assured that all clothing orders will be delivered prior to Christmas break.
Should you wish for your purchase to be a surprise for your child (ren), please let the office know.



Click the link below to view École Lansdowne's School Apparel:

<https://lansdownefall2022.itemorder.com/>



Volleyball Schedule for NOVEMBER

All games will start at 4:00pm, and end by 6:00 pm. Players should arrive 20 minutes before the game starts.



GIRLS

Junior Girls Developmental

Coach Mendy

Thursday, Nov. 3 **Game** at Lansdowne
Tuesday, Nov. 8 **Game** at Isaac Newton
Thursday, Nov. 10 **Game** at Lansdowne

Junior Girls Competitive

Coach Ginsburg & Coach Haywood

Wednesday, Nov. 2 **Game** at Keewatin
Friday, Nov. 4 Practice in the gym (3-4:30 pm)
Monday, Nov. 7 **Game** at Andrew Mynarski
Wednesday, Nov. 9 Practice in the gym (3-4 pm)

*Rides home after games should be ready by 5:40 pm.



BOYS

Junior Boys Developmental

Coach Hewitt & Coach Cayan

Tuesday, Nov. 1 **Game** at Sacre Coeur
Thursday, Nov. 3 **Game** at Isaac Newton

Junior Boys Competitive

Coach Sandison and Coach Marko

Wednesday, Nov. 2 **Game** at Lansdowne
Monday, Nov. 7 **Game** at St. John's

**Playoffs for Competitive teams (boys and girls) is
the week of Nov 14th. Dates and times TBD**

L.P.C. Lunch Program

Mme Mary will be serving a hot lunch Mondays, Wednesdays, and Fridays. Students will have the option to purchase a hot meal for \$3.00. The menu is listed below for the month of November.

November 2022

Monday	Tuesday	Wednesday	Thursday	Friday
	1	2	3	4 Grilled Cheese 🧀
7 Chicken Burger 🍔	8	9 Mac & Cheese 🍝	10	11 No School (Remembrance Day)
14 Chicken Burger 🍔	15	16 Mac & Cheese 🍝	17	18 No School (Admin Day)
21 Chicken Burger 🍔	22	23 Mac & Cheese 🍝	24	25 Grilled Cheese 🧀
28 Chicken Burger 🍔	29	30 Mac & Cheese 🍝		

Students are not to leave the premises during lunch hour.

All concerns/issues related to lunch program must first be discussed with the Coordinator. If it cannot be resolved at this level, the Coordinator or parent may contact the President of Parent Council for further direction.



November 2022

ÉCOLE LANSDOWNE

715 WIGINTON STREET, R2X 2G2
204-338-7039 FAX: 204-334-3561

TRANSPORTATION:

204-586-8800

SAFE ARRIVAL ABSENCE

REPORTING:

1-855-278-4513



MONDAY	TUESDAY	WEDNESDAY	THURSDAY	FRIDAY
	Day 3 1 Todd MacCulloch Hoop School every Tuesday (after school)	Day 4 2	Day 5 3	Day 6 4
Day 1 7	Day 2 8 Todd MacCulloch Hoop School every Tuesday (after school)	Day 3 9 Picture Day Retakes	Day 4 10 Remembrance Day Assembly	11 NO SCHOOL! (Remembrance Day)
Day 5 14	Day 6 15 Todd MacCulloch Hoop School every Tuesday (after school) Report Cards Sent Home	Day 1 16 N/K Tri- Conferences 3 pm-6pm	Day 2 17 Tri- Conferences 4pm-7pm (N/K 3pm-7pm) Scholastic Book Fair	Day 3 18 NO SCHOOL! (Admin Day) Tri- Conferences 8:30am- 11:00am Scholastic Book Fair
Day 4 21	Day 5 22 Todd MacCulloch Hoop School every Tuesday (after school) Hearing Screening	Day 6 23 Hearing Screening	Day 1 24 Hearing Screening	Day 2 25 Lansdowne Spirit Day
Day 3 28	Day 4 29 Todd MacCulloch Hoop School every Tuesday (after school)	Day 5 30		